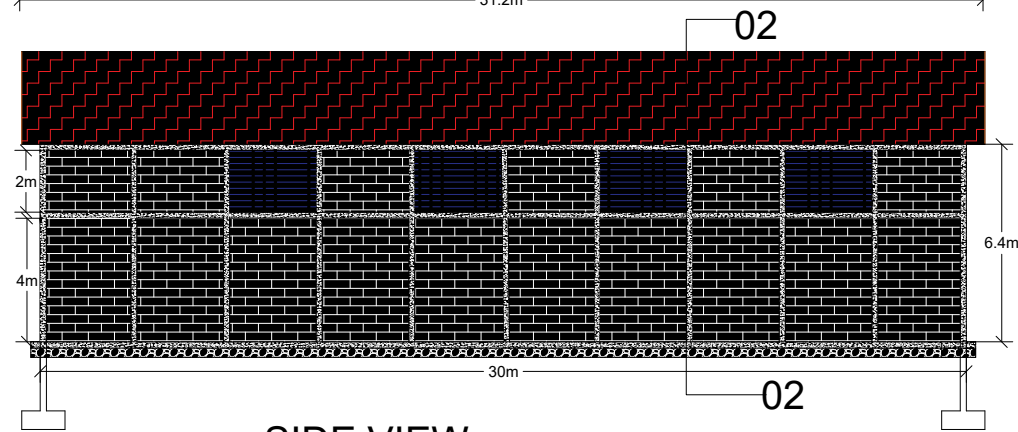
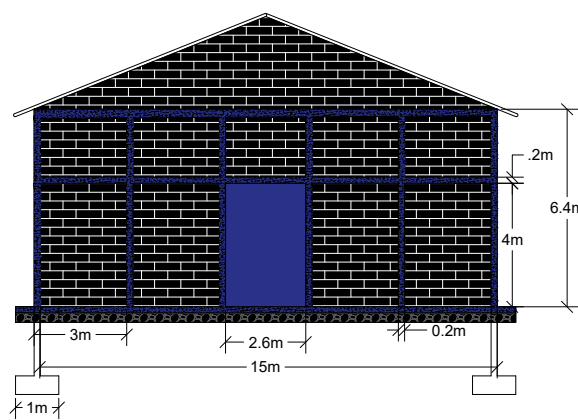


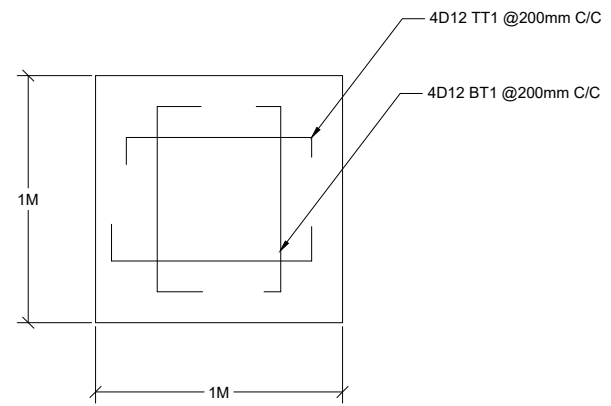
Typical Column base section details



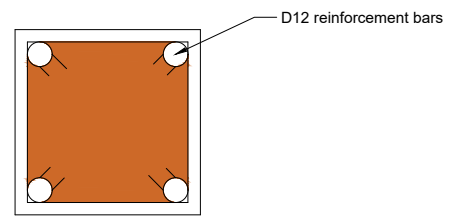
SIDE VIEW



FRONT VIEW



SECTION 01-01



NOTES

1. ALL MEASUREMENTS ARE IN METERS UNLESS STATED.
2. FOUNDATION DEPTH SHALL BE DETERMINED ON SITE BUT SHOULD NOT BE LESS THAN 600MM.
3. CLASS $\frac{15}{20}$ CONCRETE SHALL BE USED FOR BLINDING
4. CLASS $\frac{25}{20}$ CONCRETE SHALL BE USED IN FLOOR SLAB WITH NOMINAL REINFORCEMENT
5. CLASS $\frac{25}{20}$ CONCRETE SHALL BE USED IN BEAMS AND COLUMNS
6. HOOP IRON TO BE PLACED IN EVERY ALTERNATE COURSES AND BONDED TO REINFORCEMENTS IN CONCRETE COLUMNS
7. ALL REINFORCEMENT TO CONFORM TO BRITISH STANDARDS

CLIENT: KCEP-CRAL	DRAWN BY	PROPOSED MAUCHE FARMERS STORE IN NJORO SUB COUNTY	AUGUST 2019
MINISTRY OF AGRICULTURE, LIVESTOCK FISHERIES AND IRRIGATION	D. S TELIENY (P.Eng. Techn)		Mauka/Mauche WAREHOUSE
	DRWG NO. 001/1/2019		